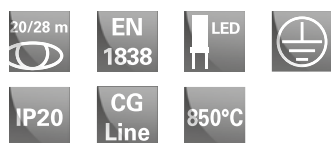


Brillant 1883, 1884, 1984 LED CGLine

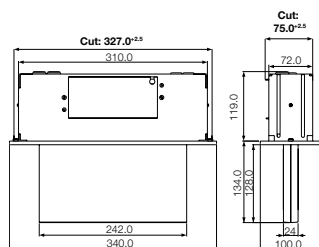
Escape sign panel luminaire



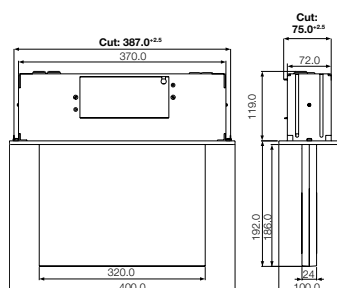
Brillant 1883, 1884, 1984 LED CGLine

- Self-monitoring LED self-contained luminaire for stand-alone operation or for connection to the central monitoring device CG Controller CGLine 400 or PC-Interface
- Wall and surface mounting housings with rectangular, slender 50 mm profile housing
- Selectable operating time 1 h or 3 h
- Minimum service requirement due to high service life of the LEDs (50,000 hours)
- Brightness selectable in 3 steps
- Test results with fault analysis (LED, charging and battery circuit) as well as status displays (operation, function test, duration test) via 3 coloured LEDs
- Automatic function test (weekly) and duration test (every 3 months)
- Manual function test or operational duration test via testing buttons
- Automatic charging monitoring and deep discharge protection with restart inhibit
- 1 minute delay of normal mode after mains returns (acc. to DIN VDE 0100-718)
- Blocking function with CG-Controller CGLine 400 or PC-Interface in times of shut-down
- Luminaires are generally suitable for maintained or non-maintained mode

1883 1-3/D LED CGLine



1884 1-3/D LED CGLine



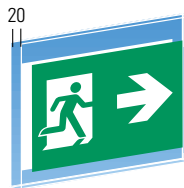
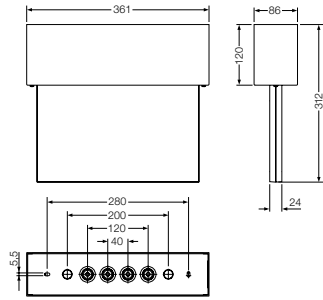
Viewing distance	1883 20 m 1884, 1984 28 m
Luminous flux Φ_E/Φ_N at end of rated operating time	50 % 1 h 20 % 3 h
Housing material	Sheet steel, bezel Polycarbonate (850 °C glow wire resistant)
Housing colour	white, sim. RAL 9010
Weight	1883 1-3/D LED 3.0 kg 1884 1-3/D LED 4.0 kg 1984 1-3/D LED 4.0 kg
Type of mounting	1883, 1884 Recessed ceiling mounting 1984 Ceiling surface mounting
Connection terminals	Mains connection 3 x 2.5 mm ² / Bus connection 2 x 1.5 mm ²
Connection voltage	230 V AC, 50 Hz
Power consumption mains operation	1883: 6.3 VA; 1884, 1984: 7.1 VA
Permissible ambient temperature	Maintained mode -5 °C to +30 °C Non-maintained mode 0 °C to +35 °C
Battery	Maintenance free and gas tight NiMH 4.8 V / 1.1 Ah
Light source	LED batten with 3-chip LEDs

Ordering details

Type		Order No.
Panel luminaire 1883 1-3/D LED CGLine	for recessed ceiling mounting, without panel, plastic bezel white, sim. RAL 9010	40071352806
Panel luminaire 1884 1-3/D LED CGLine	for recessed ceiling mounting, without panel, plastic bezel white, sim. RAL 9010	40071352807
Panel luminaire 1984 1-3/D LED CGLine	for surface ceiling mounting, without panel, white, sim. RAL 9010	40071352808

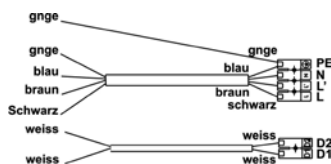
1883 and 1884:
Required recess height: 120mm /
Clamping range of the fixing angles
for ceiling thickness up to 35 mm

1984 1-3/D LED CGLine



Panel PL/PR

Concrete mounting box



Through-wiring set

Ordering details for panel 1883

Type	Scope of delivery	Order No.
Panel PL/PR acc. to ISO 7010	Two-sided pictogram panel	40071354620
Panel PU/PU acc. to ISO 7010	Two-sided pictogram panel	40071354621
Panel PU/BL acc. to ISO 7010	Two-sided pictogram panel	40071354622

Ordering details for panel 1884, 1984

Type	Scope of delivery	Order No.
Panel PL/PR acc. to ISO 7010	Two-sided pictogram panel	40071354630
Panel PU/PU acc. to ISO 7010	Two-sided pictogram panel	40071354631
Panel PU/BL acc. to ISO 7010	Two-sided pictogram panel	40071354632

Accessories

Type	Scope of delivery	Order No.
Concrete mounting box for 1883	for installation in concrete ceilings	40071348725
Concrete mounting box for 1884	for installation in concrete ceilings	40071341710
Mounting kit for 1883/1884	for installation in concrete mounting box	40071341721
Suspension set 0.5 m for 1984	with canopy	40071350517
Wall bracket for 1984	RAL 9010	40071349910
Wall bracket for 1984 simple construction	RAL 9010	40071349952
Wall mounting parallel for 1984	RAL 9010	40071349852
Chain fastening for 1984		40071348723
Through-wiring set PE, N, L, L and D1, D2		40071350422