

# Self-contained luminaire

## SV Euro 2

32 m

DIN  
4844

8 W



IP41

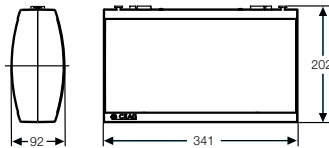
850°C

- Double-sided self-contained exit luminaire
- Foil unit with test button for function test and green LED for charging control
- Luminaire of high quality, UV-resistant, halogen-free plastic
- Includes two transparent covers with simple snap mounting and pictogram foil set
- Luminaire is generally suitable for maintained or non-maintained mode

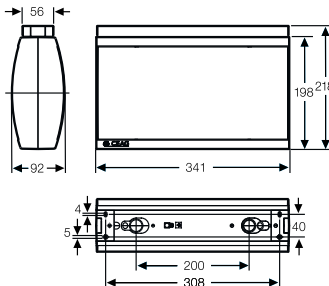


SV Euro 2 with pictogram PR

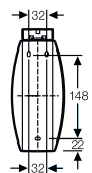
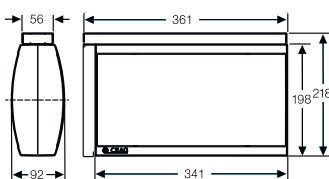
Dimensions in mm



SV Euro 2



SV Euro 2 with ceiling mounting



SV Euro 2 with wall bracket

Viewing distance	32 m
Luminous flux $\Phi_E/\Phi_{Nenn}$ at end of rated operating time	40 %
Housing material	Plastic
Housing colour	RAL 7035 (grey)
Weight	SV Euro 2-1/D: 1.6 kg SV Euro 2-3/D: 1.8 kg
Type of mounting	Ceiling, pendant, chain or wall bracket mounting
Terminals	for 2.5 mm <sup>2</sup>
Connection voltage	230 V AC, 50 Hz
Power consumption mains operation	16 VA
Permissible ambient temperature	Maintained mode -5 °C to +30 °C Non-maintained mode 0 °C to +35 °C
Battery, rechargeable, maintenance free and gas tight	Duration of emergency lighting 1 h: NiCd 3,6 V / 1,5 Ah Duration of emergency lighting 3 h: NiCd 3,6 V / 4,0 Ah
Light source	8W/T16, 450 lm

### Ordering details for duration of emergency lighting 1 h

Type	Scope of supply	Order No.
SV Euro 2-1/D (SET) acc. to ISO 7010	Luminaire enclosure incl. cover 4 self-adhesive legend foils PL, PR, PU, BL and test button 	40071354782

### Ordering details for duration of emergency lighting 3 h

Type	Scope of supply	Order No.
SV Euro 2-3/D (SET) acc. to ISO 7010	Luminaire enclosure incl. cover 4 self-adhesive legend foils PL, PR, PU, BL and test button 	40071354783

### Accessories

Type	Scope of supply	Order No.
Ceiling mounting		40071350432
Pendulum set 0.5 m <sup>1)</sup>	with canopy	40071350400
Chain fastening <sup>1)</sup>		40071351432
Wall bracket		40071350418

<sup>1)</sup> Ceiling mounting 40071350432 required