

Ex-Linear LED light fittings

2 eLLK/M 92 LED 400/800 / eLLK/M 92 LED 400/800 V-CG-S / NE / NIB-HT / NIB-CSA
(Zone 1, 2, 21, 22)

The efficient solution for your explosion-protected lighting concept

The explosion-protected linear light fittings series eLLK / M 92 LED 400/800 combines the latest LED technology with the protection of a reliable housing solution. As a result, this light fitting series is the ideal solution for lighting tasks in harsh and hazardous environments.

Latest lighting technology for a proven lighting concept

As a leading manufacturer of explosion-protected luminaires, we have designed a revolutionary LED module to fit into the existing eLLK/M 92018/18 and eLLK/M 92036/36. The linear LED

module can also be used for converting existing eLLK/M 92 light fittings with fluorescent lamps and an electronic ballast electronic ballast (EVG 09) into LED linear light fittings in just few simple steps. A special designed reflector system directs the light output of the high power LEDs to the working area without any multi-shadowing or light pollution.

The LED system design and certification allow the use in the tried and tested Ex e technology of the eLLK/M 92 light fittings. With the use of our electronic ballast EVG 09 as the driver, we can rely on more than 20 years successful operation in harsh and hazardous environments.

The advantages of the LED module:

- Environmentally friendly, no mercury
- Shock and vibration resistant, no filament or glass to break
- Immediate start, instant full illumination
- No life time reduction due to switching cycles
- Reduced disposal costs

Energy and cost savings

- 20% energy savings compared to fluorescent lamps
- Additional energy savings due to operation on demand (night/day and presence-mode)
- Reduced maintenance costs compared to standard fluorescent lamps
- Lower overall cost of ownership

Operating life

- The expected operating life of this LED module is 75,000 hours. This is a significant improvement compared to traditional light sources.
- Heat sinks are specifically engineered to remove heat from the LEDs to ensure a longer life, better lumen output and accurate colour temperature.

Features

- 20 % energy savings compared to similar fluorescent luminaires
- Special reflector design with indirect light distribution prevents undue glare and multi-shadowing
- Tried and tested technology; the EVG 09 has been used as a driver for more than 20 years
- Various light colours available - 4000 K / 5600 K
- Selected LED chips with perfect binning, low power loss and long life
- Ex-e technology for easy maintenance
- For ambient temperatures from -25 °C up to +45 °C / +55°C (HT)
- Special version to NEC standards (CSA)

- Fully operational with V-CG-S modules for connection to CEAG central battery emergency lighting systems.
- Also available as self-contained emergency luminaire eLLK 92 LED ... NE /NIB see chapter 2.4 for NE-features

Easy and cost-effective installation

Like all the luminaires in the eLLK lighting family, our standard LED linear luminaires feature a single-ended through-wiring, which, in conjunction with the generously dimensioned terminal compartment, allows a cost-effective installation. The double-sided locking facility with 10 or 20 latch points allows the protective bowl to be hinged on both sides, meaning that the fitting can be mounted on either side.

International certification

Special versions according to the NEC standards are available for the use on the American market.



Ordering details

Type	Version	Terminals	Through-wiring single-ended	Through-wiring twin-ended	Cable gland/thread	Threaded plug	Blanking plug	Order No.	
								4000 K	5600 K
eLLK 92 LED 400 - 4000 K / 5600 K									
eLLK 92 LED 400	1/6-1K	1 x 6	x	—	2 x M25, Plastic		1	1 2265 500 101	1 2265 502 101
eLLK 92 LED 400	2/6-2K	2 x 6	—	x	2 x M25, Plastic	2 x M25		1 2265 500 103	1 2265 502 103
eLLK 92 LED 400	1/6-1M ¹⁾	1 x 6	x	—	2 x M20, metal thread	1 x M20		1 2265 500 109	1 2265 502 109
eLLK 92 LED 400	2/6-2M ¹⁾	2 x 6	—	x	4 x M20, metal thread	2 x M20		1 2265 500 111	1 2265 502 111
eLLK 92 LED 400 CSA ³⁾	1/6- NPT	1 x 6	x	—	2 x M25 - 3/4'' Myers hub	2 x M25		1 2265 500 309	on request
eLLK 92 LED 400 CSA ³⁾	1/6- NPT	1 x 6	x	—	2 x M25 - 1/2'' Myers hub	2 x M25		1 2265 500 310	on request
eLLK 92 LED 400 CSA ³⁾	2/6- NPT	2 x 6	—	x	2 x M25 - 3/4'' Myers hub	2 x M25		1 2265 500 311	on request
eLLK 92 LED 800 - 4000 K / 5600 K									
eLLK 92 LED 800	1/6-1K	1 x 6	x	—	2 x M25, Plastic		1	1 2266 500 101	1 2266 502 101
eLLK 92 LED 800	2/6-2K	2 x 6	—	x	2 x M25, Plastic	2 x M25		1 2266 500 103	1 2266 502 103
eLLK 92 LED 800	1/6-1M ¹⁾	1 x 6	x	—	2 x M20, metal thread	1 x M20		1 2266 500 109	1 2266 502 109
eLLK 92 LED 800	2/6-2M ¹⁾	2 x 6	—	x	4 x M20, metal thread	2 x M20		1 2266 500 111	1 2266 502 111
eLLK 92 LED 800 CSA ³⁾	1/6- NPT	1 x 6	x	—	2 x M25 - 3/4'' Myers hub	2 x M25		1 2266 500 309	on request
eLLK 92 LED 800 CSA ³⁾	1/6- NPT	1 x 6	x	—	2 x M25 - 1/2'' Myers hub	2 x M25		1 2266 500 310	on request
eLLK 92 LED 800 CSA ³⁾	2/6- NPT	2 x 6	—	x	2 x M25 - 3/4'' Myers hub	2 x M25		1 2266 500 311	on request
eLLM 92 LED - 4000 K / 5600 K									
eLLM 92 LED 400	1/3-1K	1 x 3	—	—	1 x M25, Plastic			1 2268 500 101	1 2268 502 101
eLLM 92 LED 800	1/3-1K	1 x 3	—	—	1 x M25, Plastic			1 2269 500 101	1 2269 502 101
eLLK 92 LED 400 V-CG-S - 4000 K / 5600 K ²⁾									
eLLK 92 LED 400 V-CG-S	2/6-2K	2 x 6	—	x	2 x M25, Plastic	2 x M25		1 2265 510 103	1 2265 512 103
eLLK 92 LED 400 V-CG-S	2/6-2M ¹⁾	2 x 6	—	x	4 x M20, metal thread	2 x M25		1 2265 510 111	1 2265 512 111
eLLK 92 LED 800 V-CG-S - 4000 K / 5600 K ²⁾									
eLLK 92 LED 800 V-CG-S	2/6-2K	2 x 6	—	x	2 x M25, Plastic	2 x M25		1 2266 510 103	1 2266 512 103
eLLK 92 LED 800 V-CG-S	2/6-2M ¹⁾	2 x 6	—	x	4 x M20, metal thread	2 x M25		1 2266 510 111	1 2266 512 111
eLLK 92 LED 400 HT für Tu ≤ +55 °C - 4000 K / 5600 K									
eLLK 92 LED 400 HT	1/6-1K	1 x 6	x	—	2 x M25, Plastic		1	1 2265 550 101	1 2265 552 101
eLLK 92 LED 400 HT	2/6-2K	2 x 6	—	x	2 x M25, Plastic	2 x M25		1 2265 550 103	1 2265 552 103
eLLK 92 LED 400 HT	1/6-1M ¹⁾	1 x 6	x	—	2 x M20, metal thread	1 x M20		1 2265 550 109	1 2265 552 109
eLLK 92 LED 400 HT	2/6-2M	2 x 6	—	x	4 x M20, metal thread	2 x M20		1 2265 550 111	1 2265 552 111
eLLK 92 LED 800 HT für Tu ≤ +55 °C - 4000 K / 5600 K									
eLLK 92 LED 800 HT	1/6-1K	1 x 6	x	—	2 x M25, Plastic		1	1 2266 550 101	1 2266 552 101
eLLK 92 LED 800 HT	2/6-2K	2 x 6	—	x	2 x M25, Plastic	2 x M25		1 2266 550 103	1 2266 552 103
eLLK 92 LED 800 HT	1/6-1M ¹⁾	1 x 6	x	—	2 x M20, metal thread	1 x M20		1 2266 550 109	1 2266 552 109
eLLK 92 LED 800 HT	2/6-2M ¹⁾	2 x 6	—	x	4 x M20, metal thread	2 x M20		1 2266 550 111	1 2266 552 111

Scope of delivery including LED-module, without fixing material

Metal cable glands see catalogue part 2: 2.3.12 ff

¹⁾ with metal thread, without cable gland

²⁾ for operation with CEAG-emergency supply system

³⁾ for use according to NEC-standards

Ordering details

Type	Version	Terminals	Through-wiring single-ended	Through-wiring twin-ended	Cable gland/ thread	Threaded plug	Blank- ing plug	Order No. for 4000 K	for 5600 K
eLLK 92 LED 400 NE ²⁾									
eLLK 92 LED 400 NE	1/6-1K	1 x 6	x	—	2 x M25, plastic		1	1 2260 585 101	1 2260 586 101
eLLK 92 LED 400 NE	2/6-2K	2 x 6	—	x	2 x M25, plastic	2 x M25		1 2260 585 103	1 2260 586 103
eLLK 92 LED 400 NE	1/6-1M ¹⁾	1 x 6	x	—	2 x M20, metal thread	1 x M20		1 2260 585 109	1 2260 586 109
eLLK 92 LED 400 NE	2/6-2M ¹⁾	2 x 6	—	x	4 x M20, metal thread	2 x M20		1 2260 585 111	1 2260 586 111
eLLK 92 LED 400 NE	1/6-1M ¹⁾	1 x 6	—	x	2 x M25, metal thread	2 x M25		1 2260 585 609	1 2260 586 609
eLLK 92 LED 400 NE	2/6-2M ¹⁾	2 x 6	—	x	4 x M25, metal thread	4 x M25		1 2260 585 611	1 2260 586 611

eLLK 92 LED 800 NE ²⁾									
eLLK 92 LED 800 NE	1/6-1K	1 x 6	x	—	2 x M25, plastic		1	1 2261 585 101	1 2261 586 101
eLLK 92 LED 800 NE	2/6-2K	2 x 6	—	x	2 x M25, plastic	2 x M25		1 2261 585 103	1 2261 586 103
eLLK 92 LED 800 NE	1/6-1M ¹⁾	1 x 6	x	—	2 x M20, metal thread	1 x M20		1 2261 585 109	1 2261 586 109
eLLK 92 LED 800 NE	2/6-2M ¹⁾	2 x 6	—	x	4 x M20, metal thread	2 x M20		1 2261 585 111	1 2261 586 111
eLLK 92 LED 800 NE	1/6-1M ¹⁾	1 x 6	—	x	2 x M25, metal thread	2 x M25		1 2261 585 609	1 2261 586 609
eLLK 92 LED 800 NE	2/6-2M ¹⁾	2 x 6	—	x	4 x M25, metal thread	4 x M25		1 2261 585 611	1 2261 586 611

eLLM 92 LED 400 NE ²⁾									
eLLM 92 LED 400 NE	1/3-1K	1 x 3	—	—	1 x M25, plastic			1 2273 585 101	1 2273 586 101

Type	Version	Terminals	Through-wiring single-ended	Through-wiring twin-ended	Cable gland/ thread	Threaded plug	Blank- ing plug	Order No. for 110-127 V AC	for 220-254 V AC
eLLM 92 LED 400/800 NIB - CSA ²⁾									
eLLK 92 LED 400 NE CSA ³⁾	2/6-2 NPT	2 x 6	—	x	2 x M25 - 3/4" Myers hub	2 x M25		1 2260 579 333	1 2260 579 311
eLLK 92 LED 800 NE CSA ³⁾	2/6-2 NPT	2 x 6	—	x	2 x M25 - 3/4" Myers hub	2 x M25		1 2261 579 333	1 2261 579 311

eLLK 92 LED 800 NIB HT - 4000 K für Tu ≤ +55 °C ²⁾									
eLLK 92 LED 800 NIB HT	1/6-1K	1 x 6	x	—	2 x M25, plastic		1	1 2261 581 401	1 2261 581 101
eLLK 92 LED 800 NIB HT	2/6-2K	2 x 6	—	x	2 x M25, plastic	2 x M25		1 2261 581 403	1 2261 581 103
eLLK 92 LED 800 NIB HT	1/6-1M ¹⁾	1 x 6	x	—	2 x M20, metal thread	1 x M20		1 2261 581 409	1 2261 581 109
eLLK 92 LED 800 NIB HT	2/6-2M ¹⁾	2 x 6	—	x	4 x M20, metal thread	2 x M20		1 2261 581 411	1 2261 581 111

eLLK 92 LED 800 NIB HT - 5600 K für Tu ≤ +55 °C ²⁾									
eLLK 92 LED 800 NIB HT	1/6-1K	1 x 6	x	—	2 x M25, plastic		1	1 2261 582 401	1 2261 582 101
eLLK 92 LED 800 NIB HT	2/6-2K	2 x 6	—	x	2 x M25, plastic	2 x M25		1 2261 582 403	1 2261 582 103
eLLK 92 LED 800 NIB HT	1/6-1M ¹⁾	1 x 6	x	—	2 x M20, metal thread	1 x M20		1 2261 582 409	1 2261 582 109
eLLK 92 LED 800 NIB HT	2/6-2M ¹⁾	2 x 6	—	x	4 x M20, metal thread	2 x M20		1 2261 582 411	1 2261 582 111

Scope of delivery including LED-module, without fixing material

Metal cable glands see catalogue part 2: 2.3.12 ff

¹⁾ with metal thread, without cable gland

²⁾ Self-contained emergency light fitting

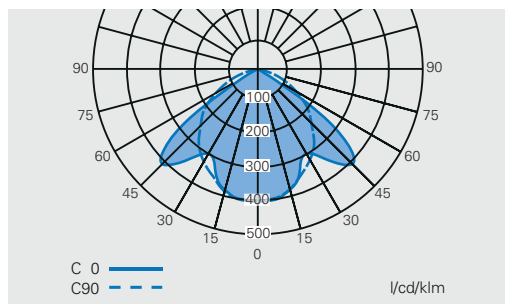
³⁾ for use according to NEC-standards

Accessories

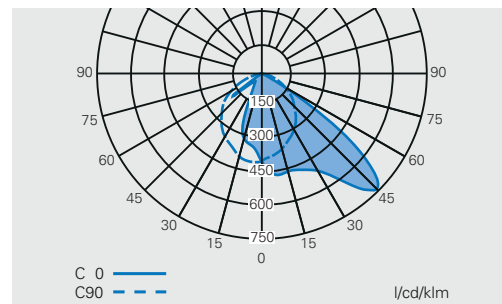
Type	Order No.
Battery set Type 2710-3 with LED display and microprocessor-monitoring, complete	2 2710 904 000
Single sided through wiring 2/6 with 2 entries M25, incl. terminals and mounting material for eLLM 92 LED 400/800	2 2218 602 000



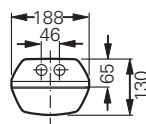
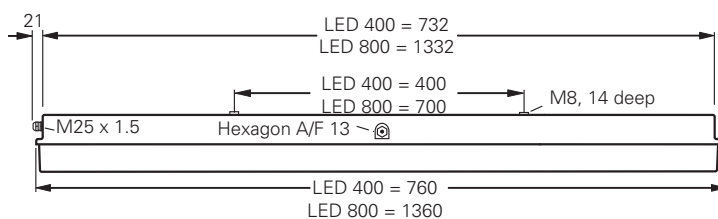
Polar curve eLLK/M 92 LED 400 / 800



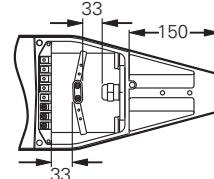
**Polar curve eLLK/M 92 LED 400/800
NE / NIB / V-CG-S in emergency operation**



eLLK 92 LED 400/800

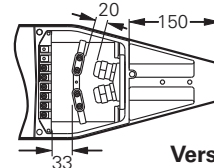
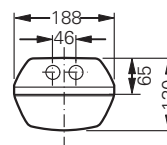
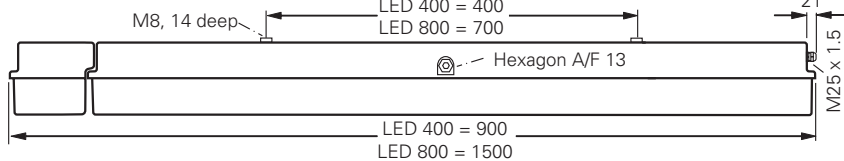


eLLM 92...



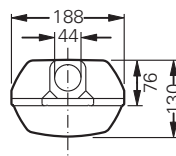
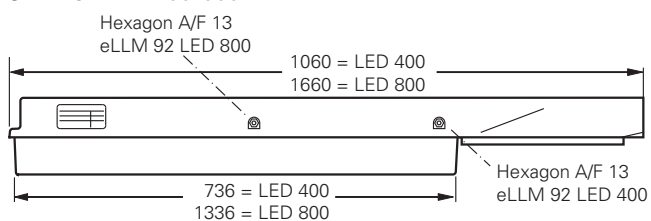
Version 1/3

eLLK 92 LED 400/800 NIB

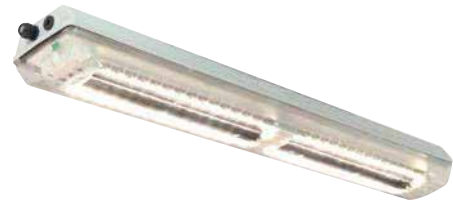


Version 2/6

eLLM 92 LED 400/800



Dimensions in mm



Technical data

	eLLK/M 92 LED 400 / eLLK 92 LED 400 HT	eLLK/M 92 LED 800 / eLLK 92 LED 800 HT
EC-Type Examination Certificate	BVS 09 ATEX E 034	BVS 09 ATEX E 034
IECEX Certificate of Conformity	IECEX BVS 09.0033	IECEX BVS 09.0033
Marking accd. to 2014/34/EU	Ⓜ II 2 G Ex de mb IIC T4 Gb Ⓜ II 2 D Ex tb IIIC T80 °C Db IP66	Ⓜ II 2 G Ex de mb IIC T4 Gb Ⓜ II 2 D Ex tb IIIC T80 °C Db IP66
Marking accd. to IECEx	Ex de mb IIC T4 Gb Ex tb IIIC T80 °C Db	Ex de mb IIC T4 Gb Ex tb IIIC T80 °C Db
Permissible ambient temperature	-25 °C up to +45 °C / -25 °C up to +55 °C (HT)	-25 °C up to +45 °C / -25 °C up to +55 °C (HT)
IK-class according to EN 50102	IK 10 Δ 20 J	IK 10 Δ 20 J
Rated voltage	110 V - 254 V AC 110 V - 250 V DC	110 V - 254 V AC 110 V - 250 V DC
Rated current	0,15 A / 0,11 A (HT)	0,25 A / 0,19 A (HT)
Frequency	50 - 60 Hz	50 - 60 Hz
Life expectancy LED module	L 70 = 75.000 h at Ta = 25 °C / 90.000 h at Ta = 25 °C (HT)	L 70 = 75.000 h at Ta = 25 °C / 90.000 h at Ta = 25 °C (HT)
Power factor cos ϕ	≥ 0.95	≥ 0.95
Circuit	EVG	EVG
Protection class	I	I
Illuminance at measurement plane	comparable with luminaires for fluorescent lamps	comparable with luminaires for fluorescent lamps
CRI	> 75	> 75
Lamp / Illuminant	LED module 400 - 2 x 13 W / LED module 400 HT - 2 x 11 W	LED module 800 - 2 x 26 W / LED module 800 HT - 2 x 22 W
Light colour	4000 K, 5600 K	4000 K, 5600 K
Rated luminous flux of the luminaire	1900 lm (4000 K), 2150 lm (5600 K) / 1615 lm (4000 K - HT), 1828 lm (5600 K - HT)	3500 lm (4000 K), 4050 lm (5600 K) / 2975 lm (4000 K - HT), 3443 lm (5600 K - HT)
Dimensions (L x W x H)	760 x 188 x 130 mm	1360 x 188 x 130 mm
Connecting terminals	L1, L2, L3, L, N, PE; max. 2 x 6 mm ² per terminal	L1, L2, L3, L, N, PE; max. 2 x 6 mm ² per terminal
Enclosure colour	RAL 7035 light grey	RAL 7035 light grey
Enclosure material	glass-fibre reinforced polyester	glass-fibre reinforced polyester
Weight	6.9 kg	10.7 kg
Cable glands / gland plates / enclosure drilling	Ex-e cable glands M25 x 1.5 (plastic), option: M20 x 1.5 metal thread ¹⁾	Ex-e cable glands M25 x 1.5 (plastic), option: M20 x 1.5 metal thread ¹⁾
Degree of protection accd. to EN 60529	IP66	IP66
Protective cover / protective bowl	Polycarbonate	Polycarbonate

¹⁾ with dustcover if entry/thread is not closed



Technical data

	eLLK 92 LED 400 V-CG-S	eLLK 92 LED 800 V-CG-S
EC-Tye Examination Certificate	BVS 09 ATEX E 034	BVS 09 ATEX E 034
IECEX Certificate of Conformity	IECEX BVS 09.0033	IECEX BVS 09.0033
Marking to 2014/34/EU	<div> <div>II 2 G Ex de mb IIC T4 Gb</div> <div>II 2 D Ex tb IIIC T80 °C Db IP66</div> </div>	<div> <div>II 2 G Ex de mb IIC T4 Gb</div> <div>II 2 D Ex tb IIIC T80 °C Db IP66</div> </div>
Marking to IECEx	<div>Ex de mb IIC T4 Gb</div> <div>Ex tb IIIC T80 °C Db</div>	<div>Ex de mb IIC T4 Gb</div> <div>Ex tb IIIC T80 °C Db</div>
Permissible ambient temperature	-25 °C up to +45 °C	-25 °C up to +45 °C
IK-class according to EN 50102	IK 10 \pm 20 J	IK 10 \pm 20 J
Rated voltage	220 V - 254 V AC 195 V - 250 V DC	220 V - 254 V AC 195 V - 250 V DC
Rated current	0.15 A / 0,08 A (emergency operation)	0.25 A / 0.13 A (emergency operation)
Frequency	50 - 60 Hz	50 - 60 Hz
Lifetime LED module	L 70 = 75.000 h at Ta = 25 °C	L 70 = 75.000 h at Ta = 25 °C
Power factor cos ϕ	≥ 0.95	≥ 0.95
Circuit	EVG/CG-S	EVG/CG-S
Insulation class	I	I
Illuminance at measurement plane	comparable with luminaires for fluorescent lamps	comparable with luminaires for fluorescent lamps
CRI	> 75	> 75
Lamp/Illuminant	LED module 400 - 2 x 13 W	LED module 800 - 2 x 26 W
Light colour	4000 K, 5600 K	4000 K, 5600 K
Rated luminous flux of the luminaire	1900 lm (4000 K), 2150 lm (5600 K) /	3500 lm (4000 K), 4050 lm (5600 K) /
Rated luminous flux in emergency operation of the luminaire (one LED-row)	950 lm (4000 K), 1075 lm (5600 K) /	1750 lm (4000 K), 2025 lm (5600 K) /
Dimensions (L x W x H)	760 x 188 x 130 mm	1360 x 188 x 130 mm
Connecting terminals	L1, L2, L3, L, N, PE; max. 2 x 6 mm ² per terminal	L1, L2, L3, L, N, PE; max. 2 x 6 mm ² per terminal
Enclosure colour	RAL 7035 light grey	RAL 7035 light grey
Enclosure material	glass-fibre reinforced polyester	glass-fibre reinforced polyester
Weight	7.4 kg	11.1 kg
Cable glands / Gland plates / Enclosure drilling	Ex-e cable glands M25 x 1.5 (plastic), option: M20 x 1.5 metal thread ¹⁾	Ex-e cable glands M25 x 1.5 (plastic), option: M20 x 1.5 metal thread ¹⁾
Degree of protection accd. EN 60529	IP66	IP66
Protective cover / protective bowl	Polycarbonate	Polycarbonate



Technical data

	eLLK/M 92 LED 400 NE / eLLK 92 LED 800 NE	eLLK 92 LED 800 NIB HT
EC-Type Examination Certificate	BVS 09 ATEX E 034	BVS 09 ATEX E 034
IECEX-Certification of conformity	IECEX BVS 09.0033	IECEX BVS 09.0033
Marking to 2014/34/EU	Ⓢ II 2 G Ex de mb ib IIC T4 Gb Ⓢ II 2 D Ex tb IIIC T80 °C Db IP66	Ⓢ II 2 G Ex de mb ib IIC T4 Gb Ⓢ II 2 D Ex tb IIIC T80 °C Db IP66
Marking to IECEx	Ex de mb ib IIC T4 Gb Ex tb IIIC T80 °C Db	Ex de mb ib IIC T4 Gb Ex tb IIIC T80 °C Db
Permissible ambient temperature	-25 °C up to +45 °C / specified data -5 °C up to +35 °C	-25 °C up to +55 °C specified data -5 °C up to +35 °C
IK-class according to EN 50102	IK 10 Δ 20 J	IK 10 Δ 20 J
Battery	Battery set with 7 Ah-NC battery, with LED display and monitoring via microprocessor	Battery set with 7 Ah-NC battery, with LED display and monitoring via microprocessor
Rated voltage	120 V - 254 V AC	220 V - 254 V AC 110 V - 127 V AC option
Rated current	0,2 A / 0,29 A	0,24 A
Frequency	50 - 60 Hz	50 - 60 Hz
Ladezeit	≥ 14 h	≥ 14 h
Lifetime LED module	L 70 = 75.000 h at $t_a=25$ °C	L 70 = 90.000 h at $t_a=25$ °C
Power factor cos ϕ	≥ 0.95	≥ 0.95
Circuit	electronic supply unit (VE12)	EVG with emergency lighting supply
Insulation class	I	I
Illuminance at measurement plane	equivalent to related fluorescent tubes	equivalent to related fluorescent tubes
CRI	> 75	> 75
Lamp/Illuminant	LED module 400 - 2 x 13 W	LED module 800 HT - 2 x 22 W
Luminous flux ratio in emergency mode of one row of LEDs	95 % (1,5 h) - 65 % (3 h) / 65 % (1,5 h) - 45 % (3 h)	44 % (3,5 h)
Light colour	4000 K, 5600 K	4000 K, 5600 K
Rated emergency operating time	1.5 h or 3 h, adjustable	3.5 h
Rated luminous flux of the luminaire	LED 400: 1900 lm (4000 K), 2150 lm (5600 K) / LED 800: 3500 lm (4000 K), 4050 lm (5600 K)	2975 lm (4000 K), 3443 lm (5600 K)
Rated luminous flux in emergency operation of the luminaire (one LED-row) 1.5 h	LED 400: 905 lm (4000 K), 1020 lm (5600 K) / LED 800: 1140 lm (4000 K), 1315 lm (5600 K)	
Rated luminous flux in emergency operation of the luminaire (one LED-row) 3 h	LED 400: 620 lm (4000 K), 700 lm (5600 K) / LED 800: 790 lm (4000 K), 910 lm (5600 K)	656 lm (4000 K - HT), 760 lm (5600 K - HT) (3.5 h)
Dimensions (L x W x H)	900 x 188 x 130 mm	1500 x 188 x 130 mm
Connecting terminals	L1, L2, L3, L, N, PE; max. 2 x 6 mm ² per terminal	L1, L2, L3, L, N, PE; max. 2 x 6 mm ² per terminal
Enclosure colour	RAL 7035 light grey	RAL 7035 light grey
Enclosure material	Glass fibre reinforced polyester	Glass fibre reinforced polyester
Weight	10.5 kg	15.3 kg
Cable glands / Gland plates / Enclosure drilling	Ex-e-cable glands M25 x 1,5 (plastic) for cables \varnothing 8 - 17 mm, Option: M20 x 1,5 metal thread ¹⁾	Ex-e-cable glands M25 x 1,5 (plastic) for cables \varnothing 8 - 17 mm, Option: M20 x 1,5 metal thread ¹⁾
Degree of protection accd. EN 60529	IP66	IP66
Protective cover / protective bowl	Polycarbonate	Polycarbonate

¹⁾ With dustcover if entry/thread is not closed



2

Technical data

	eLLK 92 LED 400 / eLLK 92 LED 800	eLLK 92 LED 400 NIB / eLLK 92 LED 800 NIB
Marking accd. to NEC 505/CEC 018	Class I, Zone 1, AEx de mb IIC T4 Gb / Ex de mb IIC T4 Gb Zone 21, AEx tb IIIC T80°C Db/ Ex tb IIIC T80°C Db	Class I, Zone 1, AEx de mb ib IIC T4 Gb / Ex de mb ib IIC T4 Gb Zone 21, AEx tb IIIC T80°C Db/ Ex tb IIIC T80°C Db
Marking accd. to NEC 500	Class I, Division 2, Groups A, B, C, D T4. Class II, Division 1, Groups E, F and G.	Class I, Division 2, Groups A, B, C, D T4. Class II, Division 1, Groups E, F and G.
Certificate of Compliance	CSA 14.700 11905	CSA 14.700 11905
Permissible ambient temperature	-25 °C up to +45 °C	-25 °C up to +45 °C specified data -5 °C up to +35 °C
IK-class according to EN 50102	IK 10 \pm 20 J	IK 10 \pm 20 J
Battery		Battery set with 7 Ah-NC battery, with LED display and monitoring via microprocessor
Rated voltage	110 V - 254 V AC 110 V - 250 V DC	220 V - 254 V AC (type U240) 110 V - 127 V AC (type U120)
Rated current	0.15 A / 0.25 A	0.2 A / 0.31 A
Frequency	50 - 60 Hz	50 - 60 Hz
Charging duration		\geq 14 h
Lifetime LED module	L 70 = 75.000 h at ta=25 °C	L 70 = 75.000 h at ta=25 °C
Power factor cos	\geq 0.95	\geq 0.95
Circuit	EVG	EVG with emergency lighting supply
Insulation class	I	I
Illuminance at measurement plane	equivalent to related fluorescent tubes	equivalent to related fluorescent tubes
CRI	> 75	> 75
Lamp/Illuminant	LED module 400 - 2 x 13 W / LED module 800 - 2 x 26 W	LED module 400 - 2 x 13 W / LED module 800 - 2 x 26 W
Light colour	4000 K, 5600 K (option)	4000 K, 5600 K (option)
Luminous flux ratio in emergency mode of one row of LEDs		98 % (400 NIB) / 44 % (800 NIB)
Rated emergency operating time		2.4 h / 3.5 h
Rated luminous flux of the luminaire	1900 lm (4000 K), 2150 lm (5600 K) - LED 400/ 3500 lm (4000 K), 4050 lm (5600 K) - LED 800	1900 lm (4000 K), 2150 lm (5600 K) - LED 400/ 3500 lm (4000 K), 4050 lm (5600 K) - LED 800
Rated luminous flux in emergency operation of the luminaire (one LED-row)		935 lm (4000 K), 1060 lm (5600 K) - LED 400 772 lm (4000 K), 893 lm (5600 K) - LED 800
Dimensions (L x W x H)	760 x 188 x 130 mm / 1360 x 188 x 130 mm	900 x 188 x 130 mm / 1500 x 188 x 130 mm
Connecting terminals	L1, L2, L3, L, N, PE; max. 2 x 6 mm ² per terminal	L1, L2, L3, L, N, PE; max. 2 x 6 mm ² per terminal
Enclosure colour	RAL 7035 light grey	RAL 7035 light grey
Enclosure material	Glass fibre reinforced polyester	Glass fibre reinforced polyester
Weight	6.9 kg / 10.7 kg	10.5 kg / 15.3 kg
Cable glands / Gland plates / Enclosure drilling	1/2 " or 3/4" NPT Myers hub metal thread with dustcover	1/2 " or 3/4" NPT Myers hub metal thread with dustcover
Degree of protection accd.	EN 60529 : IP66 / NEMA: 4X	EN 60529 : IP66 / NEMA: 4X
Protective cover / protective bowl	Polycarbonate	Polycarbonate

