

Ex-Linear light fitting with metal housing

2 EVF...E / EVF...C
(Zone 1, 2, 21, 22)

The robust lighting fixture for Ex-areas

With its flameproof housing made of copper free aluminium (Cu < 0.1 %), high degree of protection IP67 and protective tube made of borosilicate glass with a high mechanical and thermal stability, this luminaire is the ideal solution for harsh and hazardous environments.

The luminaire for all types of applications




The EVF luminaire series with G13 sockets for fluorescent lamps are either fitted with an electronic (EVF .. E) or electromagnetic ballasts (EVF .. C). Two types are available: single lamp or double lamp versions. The easy-to-open threaded cover, the large terminal compartment and the lamp assembly on a guide carriage facilitate servicing.



Features

- Robust Ex-d housing
- Temperature class T6
- Electronic or electromagnetic ballast
- Easy opening due to screw cover on end
- Large terminal compartment
- High degree of protection IP67

Ordering details

	Type	Terminals	Through-wiring single-ended	Entry / thread	Threaded plug	Order No.
	EVF 120 E (1 x 18 W)	1 x 3	x	2 x 3/4" NPT, metal thread	1 x 3/4" Ex-d	NOR 000 005 070 300
	EVF 140 E (1 x 36 W)	1 x 3	x	2 x 3/4" NPT, metal thread	1 x 3/4" Ex-d	NOR 000 005 070 308
	EVF 165 E (1 x 58 W)	1 x 3	x	2 x 3/4" NPT, metal thread	1 x 3/4" Ex-d	NOR 000 005 070 316
	EVF 240 E (2 x 36 W)	1 x 3	x	2 x 3/4" NPT, metal thread	1 x 3/4" Ex-d	NOR 000 005 070 328
	EVF 265 E (2 x 58 W)	1 x 3	x	2 x 3/4" NPT, metal thread	1 x 3/4" Ex-d	NOR 000 005 070 333
	EVF 120 C (1 x 18/20 W)	1 x 3	x	2 x 3/4" NPT, metal thread	1 x 3/4" Ex-d	NOR 000 005 070 064
	EVF 140 C (1 x 36/40 W)	1 x 3	x	2 x 3/4" NPT, metal thread	1 x 3/4" Ex-d	NOR 000 005 070 030
	EVF 165 C (1 x 58/65 W)	1 x 3	x	2 x 3/4" NPT, metal thread	1 x 3/4" Ex-d	NOR 000 005 070 402
	EVF 240 C (2 x 36/40 W)	1 x 3	x	2 x 3/4" NPT, metal thread	1 x 3/4" Ex-d	NOR 000 005 070 022
	EVF 265 C (2 x 58/65 W)	1 x 3	x	2 x 3/4" NPT, metal thread	1 x 3/4" Ex-d	NOR 000 005 070 428

Scope of delivery without lamp and fixing accessories
Metal cable glands see catalogue part 2: 2.3.12 ff

Accessories

Type	Content	Application	Order No.
Wire guard REVF 65	steel, white epoxid coated ¹⁾	for EVF 165/265	NOR 000 000 507 319
Wire guard REVF 20	steel, white epoxid coated	for EVF 120	NOR 000 000 507 385
Wire guard REVF 40	steel, white epoxid coated ¹⁾	for EVF 140/240	NOR 000 000 507 393

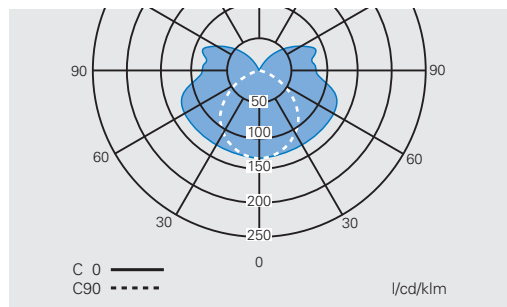
¹⁾ EVF 240 and EVF 265 2 pcs. per luminaire.

2.11

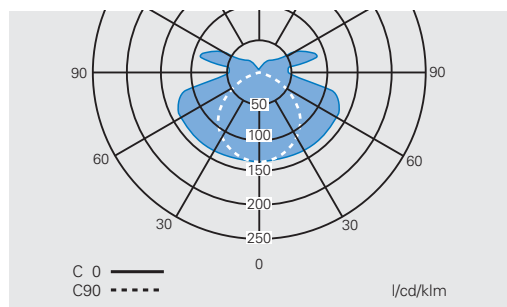
Dimension drawing / Polar curve

EVF ... E / EVF ... C

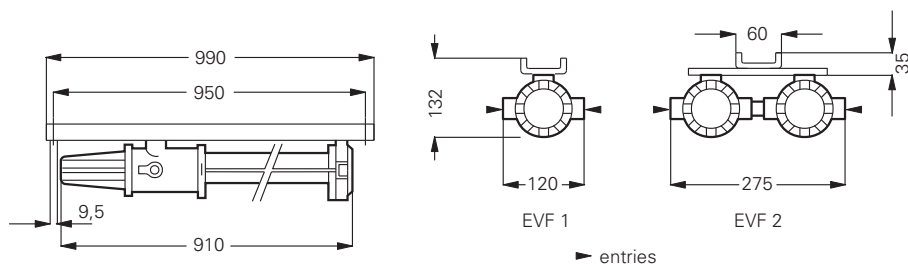
Polar curve EVF 1...



Polar curve EVF 2...

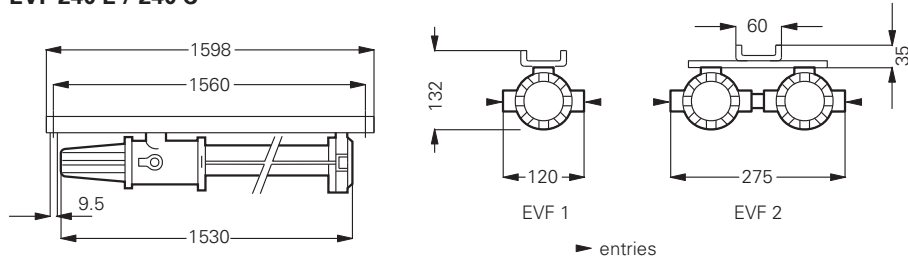


EVF 120 E / 120 C



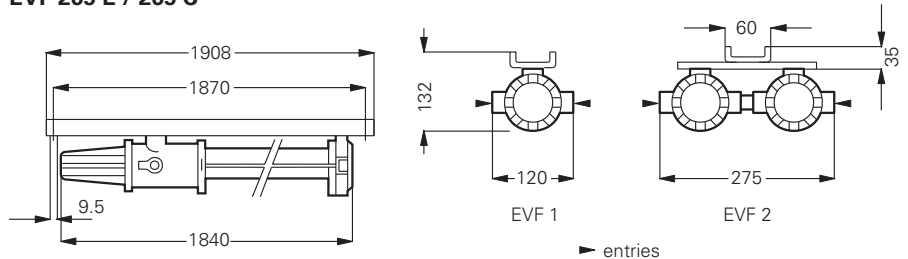
EVF 140 E / 140 C

EVF 240 E / 240 C

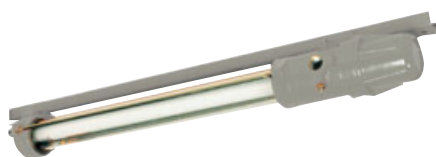


EVF 165 E/165 C /

EVF 265 E / 265 C



Dimensions in mm



Technical data

	EVF 120 E	EVF 140 E / EVF 240 E
EC-Type Examination Certificate	LOM 02 ATEX 2019 X	LOM 02 ATEX 2019 X
IECEx Certificate of Conformity	IECEx BKI 07.0033 X	IECEx BKI 07.0033 X
Marking accd. to 94/9/EC	II 2 G Ex d IIC T6	II 2 G Ex d IIC T6
Marking accd. to IECEx	Ex d IIC T6/ T5 Ex tD A21 IP67 T 76°C/92°C	Ex d IIC T6/ T5 Ex tD A21 IP67 T 76°C
Permissible ambient temperature	-20 °C up to +55 °C	-20 °C up to +55 °C
Rated voltage	198 V - 254 V AC 175 V - 280 V DC	198 V - 254 V AC 175 V - 280 V DC
Rated current	0.09 A	0.16 A / 0.32 A
Frequency	50/60 Hz	50/60 Hz
Power factor cos φ	> 0.9	> 0.9
Circuit	EVG	EVG
Protection class	I	I
Lamp / Illuminant	1 x T26 / 18 W	1 x T26 / 36 W / 2 x T26 / 36 W
Rated luminous flux	1350 lm ¹⁾	3350 lm ¹⁾ / 6700 lm ¹⁾
Lamp cap	G13 accd. to IEC 60061-1	G13 accd. to IEC 60061-1
Light output ratio	83%	83%
Dimensions (L x W x H)	990 x 120 x 145 mm	1598 x 120 x 145 mm 1598 x 275 x 150 mm
Connecting terminals	L1, N and PE: 2 x 2.5 mm ² / PE ext. 2 x 6 mm ²	L1, N and PE: 2 x 2.5 mm ² / PE ext. 2 x 6 mm ²
Enclosure colour	Polyester finish grey	Polyester finish grey
Enclosure material	copper-free aluminium	copper-free aluminium
Weight	6.2 kg	9 kg / 16.9 kg
Cable glands / gland plates / enclosure drilling	direct entry: 2 x 3/4" NPT 1 x Ex-d blanking plug 3/4"	direct entry: 2 x 3/4" NPT 1 x Ex-d blanking plug 3/4"
Degree of protection accd. to EN 60529	IP67	IP67
Protective cover / protective bowl	borosilicate glass	borosilicate glass

¹⁾ depends on used lamps



Technical data

	EVF 165 E / EVF 265 E	EVF 120 C
EC-Type Examination Certificate	LOM 02 ATEX 2019 X	LOM 02 ATEX 2019 X
IECEX Certificate of Conformity	IECEX BK1 07.0033 X	IECEX BK1 07.0033 X
Marking accd. to 94/9/EC	II 2 G Ex d IIC T6/T5	II 2 G Ex d IIC T6
Marking accd. to IECEx	Ex d IIC T6/ T5 Ex tD A21 IP67 T 76°C	Ex d IIC T6/ T5 Ex tD A21 IP67 T 92°C
Permissible ambient temperature	-20 °C up to +40 °C (T6) -20 °C up to +55 °C (T5)	-20 °C up to +55 °C
Rated voltage	198 V - 254 V AC 175 V - 280 V DC	230 V
Rated current	0.25 A / 0.49 A	0.15 A
Frequency	50/60 Hz	50 Hz
Power factor cos φ	> 0.9	> 0.90
Circuit	EVG	conventional ballast with ignitor
Protection class	I	I
Lamp / Illuminant	1 x T26 / 58 W / 2 x T26 / 58 W	1 x T26 / 18 W
Rated luminous flux	5200 lm ¹⁾ / 10400 lm ¹⁾	1350 lm ¹⁾
Lamp cap	G13 accd. to IEC 60061-1	G13 accd. to IEC 60061-1
Light output ratio	83% / 73%	81%
Dimensions (L x W x H)	1908 x 120 x 145 mm 1908 x 275 x 150 mm	990 x 120 x 145 mm
Connecting terminals	L1, N and PE: 2 x 2.5 mm ² / PE ext. 2 x 6 mm ²	L1, N and PE: 2 x 2.5 mm ² / PE ext. 2 x 6 mm ²
Enclosure colour	Polyester finish grey	Polyester finish grey
Enclosure material	copper-free aluminium	copper-free aluminium
Weight	14.6 kg / 26.4 kg	6.2 kg
Cable glands / gland plates / enclosure drilling	direct entry: 2 x 3/4" NPT 1 x Ex-d blanking plug 3/4"	direct entry: 2 x 3/4" NPT 1 x Ex-d blanking plug 3/4"
Degree of protection accd. to EN 60529	IP67	IP67
Protective cover / protective bowl	borosilicate glass	borosilicate glass

¹⁾ depends on used lamps



Technical data

	EVF 140 C / EVF 240 C	EVF 165 C / EVF 265 C
EC-Type Examination Certificate	LOM 02 ATEX 2019 X	LOM 02 ATEX 2019 X
IECEx Certificate of Conformity	IECEx BKI 07.0033 X	IECEx BKI 07.0033 X
Marking accd. to 94/9/EC	II 2 G Ex d IIC T6	II 2 G Ex d IIC T6/T5
Marking accd. to IECEx	Ex d IIC T6/ T5 Ex tD A21 IP67 T 92°C	Ex d IIC T6/ T5 Ex tD A21 IP67 T 76°C/92°C
Permissible ambient temperature	-20 °C up to +55 °C	-20 °C up to +55 °C (T5) -20 °C up to +40 °C (T6)
Rated voltage	230 V	230 V
Rated current	0.25 A / 0.50 A	0.39 A / 0.78 A
Frequency	50 Hz	50 Hz
Power factor cos φ	> 0.90	> 0.90
Circuit	conventional ballast with ignitor	conventional ballast with ignitor
Protection class	I	I
Lamp / Illuminant	1 x T26 / 36 W	1 x T26 / 58 W
Rated luminous flux	3350 lm ¹⁾ / 6700 lm ¹⁾	5200 lm ¹⁾ / 10400 lm ¹⁾
Lamp cap	G13 accd. to IEC 60061	G13 accd. to IEC 60061
Light output ratio	81% / 71%	81% / 71%
Dimensions (L x W x H)	1598 x 120 x 145 mm / 1598 x 275 x 150 mm	1908 x 120 x 145 mm / 1908 x 275 x 150 mm
Connecting terminals	L1, N and PE: 2 x 2.5 mm ² / PE ext. 2 x 6 mm ²	L1, N and PE: 2 x 2.5 mm ² / PE ext. 2 x 6 mm ²
Enclosure colour	Polyester finish grey	Polyester finish grey
Enclosure material	copper-free aluminium	copper-free aluminium
Weight	9 kg / 16.9 kg	14.6 kg / 26.4 kg
Cable glands / gland plates / enclosure drilling	direct entry: 2 x 3/4" NPT 1 x Ex-d blanking plug 3/4"	direct entry: 2 x 3/4" NPT 1 x Ex-d blanking plug 3/4"
Degree of protection accd. to EN 60529	IP67	IP67
Protective cover / protective bowl	borosilicate glass	borosilicate glass

¹⁾ depends on used lamps