

# 3.1

## Ex-e/i Cable Glands

Plastic version for Zone 1, 2, 21 and 22 1 - according to EN 60079-0: 2012

3

### Conform with latest standards

Cable glands with metric screw-in threads are now standard and had replace the PG cable glands that were formally used.

The CEAG plastic cable glands are in accordance with EN 60079-0: 2012 and can be used in Ex-e/Ex-i housings in hazardous areas of the Zones 1, 2 and 22.

Optional and not used cable glands must be closed with certified blanking plugs. The blanking plugs allow for a flexible and cost effective utilization of the explosion-protected appliances. Changes and upgrades can be then easily carried out at a later date.

The outstanding feature of the CEAG cable glands is the large cable connection area.

### Degree of protection

A high IP safety standard is achieved with the integrated sealing lip on the screw-in cable entries. Depending on the surface roughness the use of an additional sealing ring may not be necessary. The good mechanical and handling features are achieved by using a modified Polyamide material and a optimized tooling area.



### Features

- Large cable connection area
- Same wrench tool for both hexagons
- Conform accd. to latest EN 60079-0:2012
- Safety standard IP66
- Optimized tooling area
- Trapezoid thread, for a secure hold



Screw plug



Blanking plug



Cable gland for Ex-i



Cable gland for Ex-e

Technical data

Ex e cable glands

Marking accd. to 2014/34/EU	⊕ II 2 G Ex eb IIC Gb / ⊕ II 2 D Ex tb IIIC Db
EC-Type Examination Certificate	PTB 14 ATEX 1015 X
IECEX Certificate of Conformity	IECEX PTB 14.0027X
Marking accd. to IECEx	Ex eb IIC Gb / Ex eb IIC Gb
Permissible ambient temperature	-20 °C up to +70 °C (see ordering details)
M20	-40 °C up to +70 °C (see ordering details)
M25 - M63	-55 °C up to +70 °C (see ordering details)
Degree of protection accd. to EN 60529	IP66 / IP68: 1 m water depth for 0.5 h
Enclosure material	Polyamide

Ex-e screw plug

Marking accd. to 2014/34/EU	⊕ II 2 G Ex e II / ⊕ II 2 D Ex tb IIIC Db IP66 (M63 only for II 2 G)
EC-Type Examination Certificate	PTB 98 ATEX 3130
IECEX Certificate of Conformity	IECEX PTB 03.0000
Marking accd. to IECEx	Ex e IIC Gb / Ex tb IIIC Db IP66/IP65 (M63 only for II 2 G)
Permissible ambient temperature	-55 °C to +55 °C
Degree of protection accd. to EN 60529	IP66 / IP68: 1 m water depth for 0.5 h
Enclosure material	Polyamide

Blanking plug I Reducing rings

Marking accd. to 2014/34/EU	⊕ II 2 G Ex eb IIC Gb / ⊕ II 2 D Ex tb IIIC Db IP66
EC-Type Examination Certificate	PTB 14 ATEX 1015X
IECEX Certificate of Conformity	IECEX PTB 14.0027X
Marking accd. to IECEx	Ex eb IIC Gb / Ex tb IIIC Db
Permissible ambient temperature	-55 °C bis +70 °C
Degree of protection accd. to EN 60529	IP66
Enclosure material	Polyamide

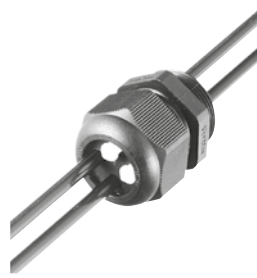
## Ex-e/i Cable plastic glands



Cable gland for Ex-e



Cable gland for Ex-i



Multiple cable gland

3

### Ordering details

Thread	Cable Ø mm			A/F	L	E	Weight	OU	Order No.	Order No.
	seal. 1+2+3	seal. 1+2	seal. 1	mm	mm	mm	kg		(-20 °C up to +70 °C)	(-40/-55 °C up to +70 °C)
<b>Ex-e cable gland with short thread accd. to EN 50262 -black</b>										
M12 x 1.5	---	---	5 - 7	15	19.3	8	0.003	20	<b>GHG 960 1955 R0001</b>	---
M16 x 1.5	---	---	7 - 10	20	23.0	8	0.006	20	<b>GHG 960 1955 R0002</b>	---
M20 x 1.5	5.5 - 7	7 - 9	9.5 - 13	24	25.0	8	0.09	20	<b>GHG 960 1955 R0003</b>	---
M20 x 1.5	5.5 - 7	7 - 9	9.5 - 11	24	25.0	8	0.09	20	---	<b>GHG 960 1955 R0010</b>
M25 x 1.5	8 - 10	10 - 13	13.5 - 17.5	29	29.5	8	0.017	20	<b>GHG 960 1955 R0004</b>	---
M25 x 1.5	8 - 10	10 - 13	13.5 - 15	29	29.5	13	0.018	20	---	<b>GHG 960 1955 R0009</b>
M32 x 1.5	---	14 - 17	17.5 - 21	36	35.5	10	0.026	20	<b>GHG 960 1955 R0005</b>	<b>GHG 960 1955 R0011</b>
<b>Ex-e cable gland with long thread -black</b>										
M12 x 1.5	---	---	5 - 7	15	19.3	12	0.003	20	<b>GHG 960 1955 R0021</b>	---
M16 x 1.5	---	---	7 - 10	20	23.0	12	0.007	20	<b>GHG 960 1955 R0022</b>	---
M20 x 1.5	5.5 - 7	7 - 9	9.5 - 13	24	25.0	13	0.010	20	<b>GHG 960 1955 R0023</b>	---
M20 x 1.5	5.5 - 7	7 - 9	9.5 - 11	24	25.0	13	0.010	20	---	<b>GHG 960 1955 R0029</b>
M25 x 1.5	8 - 10	10 - 13	13.5 - 17.5	29	29.5	13	0.018	20	<b>GHG 960 1955 R0024</b>	---
M25 x 1.5	8 - 10	10 - 13	13.5 - 15	29	29.5	13	0.018	20	---	<b>GHG 960 1955 R0030</b>
M32 x 1.5	---	14 - 17	17.5 - 21	36	35.5	15	0.029	20	<b>GHG 960 1955 R0025</b>	<b>GHG 960 1955 R0031</b>
M40 x 1.5	---	19 - 22	22 - 28	46	39.5	15	0.046	10	---	<b>GHG 960 1955 R0026</b>
M50 x 1.5	---	24 - 28	28 - 35	55	44.0	16	0.073	10	---	<b>GHG 960 1955 R0027</b>
M63 x 1.5	---	29 - 35	36 - 48 <sup>1)</sup>	68	47.0	16	0.116	5	---	<b>GHG 960 1955 R0028</b>
<b>Ex-i cable gland with short thread -blue</b>										
M12 x 1.5	---	---	5 - 7	15	19.3	8	0.003	20	<b>GHG 960 1955 R0101</b>	---
M16 x 1.5	---	---	7 - 10	20	23.0	8	0.006	20	<b>GHG 960 1955 R0102</b>	---
M20 x 1.5	5.5 - 7	7 - 9	9.5 - 13	24	25.0	8	0.009	20	<b>GHG 960 1955 R0103</b>	---
M20 x 1.5	5.5 - 7	7 - 9	9.5 - 11	24	25.0	8	0.009	20	---	<b>GHG 960 1955 R0109</b>
M25 x 1.5	8 - 10	10 - 13	13.5 - 17.5	29	29.5	8	0.017	20	<b>GHG 960 1955 R0104</b>	---
M25 x 1.5	8 - 10	10 - 13	13.5 - 15	29	29.5	8	0.017	20	---	<b>GHG 960 1955 R0110</b>
M32 x 1.5	---	14 - 17	17.5 - 21	36	35.5	10	0.026	20	<b>GHG 960 1955 R0105</b>	<b>GHG 960 1955 R0111</b>
<b>Ex-i cable gland with long thread -blue</b>										
M12 x 1.5	---	---	5 - 7	15	19.3	12	0.003	20	<b>GHG 960 1955 R0121</b>	---
M16 x 1.5	---	---	7 - 10	20	23.0	12	0.007	20	<b>GHG 960 1955 R0122</b>	---
M20 x 1.5	5.5 - 7	7 - 9	9.5 - 13	24	25.0	13	0.010	20	<b>GHG 960 1955 R0123</b>	---
M20 x 1.5	5.5 - 7	7 - 9	9.5 - 11	24	25.0	13	0.010	20	---	<b>GHG 960 1955 R0129</b>
M25 x 1.5	8 - 10	10 - 13	13.5 - 17.5	29	29.5	13	0.018	20	<b>GHG 960 1955 R0124</b>	---
M25 x 1.5	8 - 10	10 - 13	13.5 - 15	29	29.5	13	0.018	20	---	<b>GHG 960 1955 R0130</b>
M32 x 1.5	---	14 - 17	17.5 - 21	36	35.5	15	0.029	20	<b>GHG 960 1955 R0125</b>	<b>GHG 960 1955 R0131</b>
M40 x 1.5	---	19 - 22	22 - 28	46	39.5	15	0.046	10	---	<b>GHG 960 1955 R0126</b>
M50 x 1.5	---	24 - 28	28 - 35	55	44.0	16	0.073	10	---	<b>GHG 960 1955 R0127</b>
M63 x 1.5	---	29 - 35	36 - 48 <sup>1)</sup>	68	47.0	16	0.116	5	---	<b>GHG 960 1955 R0128</b>

<sup>1)</sup> M63 with additional sealing

Cable glands with PG-thread are available on request. The order No. will show 1 pcs. Please note that only order units (OU) can be ordered.



Enlargement cable gland



Reducing rings



Screw plug



Blanking plug

Ordering details

Thread	Cable Ø mm seal. 1+2	seal. 2	A/F mm	L mm	E mm	Weight kg	OU	Order No. (-20 °C up to +70 °C)	Order No. (-40/-55 °C up to +70 °C)
--------	-------------------------	---------	-----------	---------	---------	--------------	----	------------------------------------	--

Multiple cable glands -black

M25 x 1.5	2 x 4.5 - 7		29	29.5	8	0.019	20	GHG 960 1955 R0054	---
M32 x 1.5	4 x 4.5 - 7		36	35.5	10	0.030	20	GHG 960 1955 R0055	---

Slotted cable glands for special cables:

(Breakout-internal cable type orange/ Ultra-Fox Plus type 903 AG 621 02 709/ Ehret / ICS 24 type 84 305 ... 2)

M20 x 1.5 black <sup>2)</sup>			24	25.0	8	0.010	20	GHG 960 1955 R0403	
M20 x 1.5 blue <sup>2)</sup>			24	25.0	8	0.010	20	GHG 960 1955 R0413	

Enlargement cable glands (reduced thread diameter)

M16/M20	7 - 9	9.5 - 13	24	25.0	12	0.010	20	GHG 960 1956 R0002	
M20/M25	10 - 13	13.5 - 17.5	29	29.5	13	0.018	20	GHG 960 1956 R0003	
M25/M32	14 - 17	17.5 - 21	36	35.5	13	0.029	20	GHG 960 1956 R0004	
M32/M40	19 - 22	22.0 - 28	46	39.5	15	0.046	10	GHG 960 1956 R0005	
M40/M50	24 - 28	28.0 - 35	55	44.0	15	0.073	10	GHG 960 1956 R0006	
M50/M63	29 - 35	36.0 - 48 <sup>1)</sup>	68	47.0	16	0.116	5	GHG 960 1956 R0007	

	E mm	Ø D mm	Weight kg	OU	Order No. (-55 °C up to +70 °C)
--	---------	-----------	--------------	----	------------------------------------

Blanking plug for cable glands

M12	30.3	6.0	0.001	20	GHG 960 1944 R0101
M16	33.0	7.0	0.001	20	GHG 960 1944 R0102
M20	34.5	8.5	0.002	20	GHG 960 1944 R0103
M25	36.0	11.0	0.003	20	GHG 960 1944 R0104
M32	39.5	14.0	0.005	20	GHG 960 1944 R0105
M40	42.0	20.0	0.018	10	GHG 960 1944 R0106
M50	44.0	26.0	0.033	10	GHG 960 1944 R0107
M63	45.0	34.0	0.108	5	GHG 960 1944 R0108

Thread	L mm	E mm	Ø D mm	Weight kg	OU	Order No. (-55 °C up to +70 °C)
--------	---------	---------	-----------	--------------	----	------------------------------------

Screw plug

M16 x 1.5	4.0	12	21.5	0.002	20	GHG 960 1952 R0111
M20 x 1.5	4.0	13	25.5	0.004	20	GHG 960 1952 R0112
M25 x 1.5	4.0	13	30.5	0.007	20	GHG 960 1952 R0113
M32 x 1.5	5.5	15	37.5	0.013	10	GHG 960 1952 R0114
M40 x 1.5	5.5	15	45.5	0.020	10	GHG 960 1952 R0115
M50 x 1.5	5.5	16	55.5	0.030	5	GHG 960 1952 R0116
M63 x 1.5	6.5	16	85.0	0.040	5	GHG 960 1952 R0117

<sup>1)</sup> M63 with additional sealing

<sup>2)</sup> Cable dimensions and ambient temperatures see operating instruction

Cable glands with PG-thread are available on request.

The order No. will show 1 pcs. Please note that only order units (OU) can be ordered.

## Ex-plastic reducer rings



Cable gland



Screw plug



Blanking plug



Reducing ring

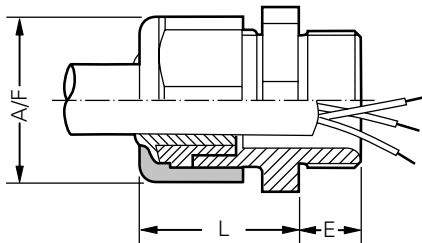
3

Thread 1	Thread 2	A/F mm	L mm	E mm	L1 mm	Weight kg	OU	Order No. (-55 °C up to +70 °C)
<b>Reducing rings</b>								
M20 x 1.5	M16 x 1.5	24	6	8	8	0.014	20	<b>GHG 960 1946 R0071</b>
M25 x 1.5	M20 x 1.5	29	6	8	8	0.016	20	<b>GHG 960 1946 R0072</b>
M32 x 1.5	M20 x 1.5	36	6	10	6	0.017	20	<b>GHG 960 1946 R0056</b>
M32 x 1.5	M25 x 1.5	36	6	10	10	0.016	20	<b>GHG 960 1946 R0074</b>
M40 x 1.5	M25 x 1.5	46	6	10	8	0.023	10	<b>GHG 960 1946 R0059</b>
M40 x 1.5	M32 x 1.5	46	6	10	10	0.021	10	<b>GHG 960 1946 R0077</b>
M50 x 1.5	M32 x 1.5	55	6	12	10	0.036	10	<b>GHG 960 1946 R0062</b>
M50 x 1.5	M40 x 1.5	68	6	12	10	0.032	10	<b>GHG 960 1946 R0080</b>
M63 x 1.5	M40 x 1.5	68	6	12	10	0.040	5	<b>GHG 960 1946 R0065</b>
M63 x 1.5	M50 x 1.5	68	6	12	12	0.030	5	<b>GHG 960 1946 R0083</b>

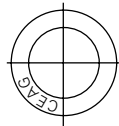
Cable glands with PG-thread are available on request.

The order No. will show 1 pcs. Please note that only order units (OU) can be ordered.

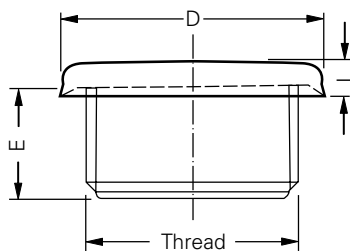
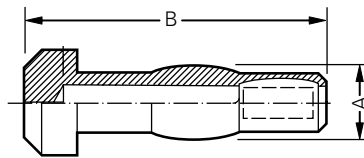
### Dimension drawing



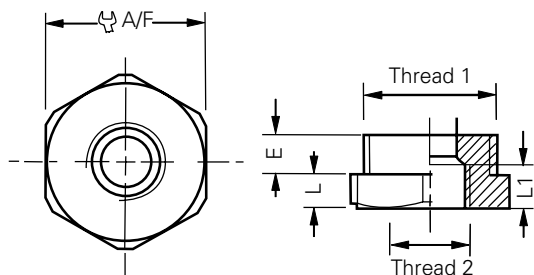
Cable gland



Blanking plug



Screw plug



Reducing rings

Dimensions in mm