



3-pole EMERGENCY STOP



3-pole

Technical data

Ex-safety switches 10 A

Marking accd. to 94/9/EC	Ⓔ II 2 G Ex ed IIC T6 / Ⓔ II 2 D Ex tD A21 IP66 T80 °C
EC-Type Examination Certificate	PTB 00 ATEX 1074
IECEX Certificate of Conformity	BKI 07.0014
Marking accd. to IECEx	Ex ed IIC T6 Ex tD A21 IP66 T53 °C
Permissible ambient temperature	-20 °C up to +40 °C ¹⁾
Rated voltage	up to max. 500 V
Rated current	max. 10 A
Frequency	50/60 Hz
Rated making-/rated breaking capacity AC-3 accd. EN 60947-3	U _o 230 V / I _o 10 A U _o 400 V / I _o 10 A U _o 500 V / I _o 10 A
Back-up fuse	up to 400 V AC: 20 A gL up to 500 V AC: 16 A gL
Connecting terminals	main contact 2 x 1.5 - 2.5 mm ² auxiliary-/Signal contact 2 x 0.5 - 2.5 mm ² (option)
Degree of protection accd. to EN 60529	IP66
Protection class	I
Cable glands/enclosure drilling	M20 cable gland see ordering details M25 cable gland see ordering details
Weight	0.55 kg
Enclosure material	impact resistant polyamide
Enclosure colour	black
Auxiliary contact (option)	1 x NO making - lagging; breaking - leading
Padlocking facility	can be locked in OFF position with 3 commercially available padlocks (Ø max. 6 mm)

¹⁾ Other ambient temperatures on request

Ex-safety switches



3-pole



3-pole EMERGENCY STOP

Ordering details

5

Content	Cable gland	Auxiliary contact	Order No.
Safety switch 10 A 3-pole			
3-pole	2 x M25 / 1 x M20	1 NO	GHG 261 0005 R0009
3-pole	2 x M25	none	GHG 261 0007 R0001
3-pole	2 x M20	1 NO	GHG 261 0005 R0005
3-pole EMERGENCY STOP	2 x M25 / 1 x M20	1 NO	GHG 261 0005 R0010
3-pole EMERGENCY STOP	2 x M25	none	GHG 261 0007 R0002
Safety switch 10 A 4-pole			
4-pole	2 x M25	none	GHG 261 0007 R0003

Customized version on request, auxiliary contacts in Ex ia available

Accessories

Mounting plate for Ex-safety switches 10 A 3-pole

Type	Application	Fixing method	Order No.
Size 1	Wall mounting	screwless mounting	GHG 610 1953 R0101
Size 1	Pipe clamp	screwless mounting	GHG 610 1953 R0102
Size 1	Trellis-work mounting	screwless mounting	GHG 610 1953 R0103

Accessories for mounting plates

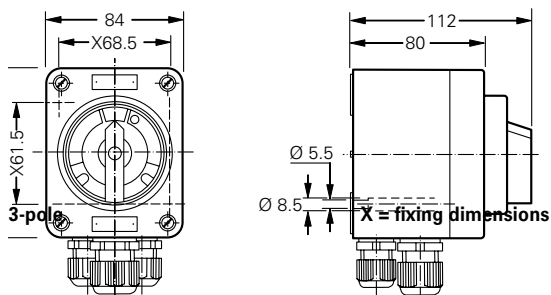
Type	OU	Order No.
Label holder with type label (blank) for mounting plate size 1, 2, 2A and 3	10	GHG 610 1953 R0057
Mounting set for pipes 1" (of 27 - 30 mm) for mounting plates with pipe fixing	10	GHG 610 1953 R0020

Accessories for canopies plates

Type	Application	OU	Order No.
Size 1	for mounting plate size 1	1	GHG 610 1955 R0101

Please pay attention that only order units (OU) according to the ordering details can be delivered.

Dimension drawing



Dimensions in mm