



## Technical data

### Ex-plugs and receptacles acc. to IEC 60309-1/2

Marking accd. to 94/9/EC	Ⓔ II 3 G Ex nC IIC T6
EC-Type Examination Certificate	PTB 99 ATEX 1115
Permissible ambient temperature	-20 °C to +40 °C <sup>1)</sup>
Rated voltage	690 V (AC)
Rated current	up to 32 A
Frequency	up to 400 Hz
Rated making / Rated breaking capacity AC-3 accd. EN 60947-3	U <sub>e</sub> 690 V / I <sub>e</sub> 32 A
External back up fuse	without therm. protection: 35 A with therm. protection: 50 A gL (rated current 32 A set to)
Protection class	I
Degree of protection accd. to EN 60529	IP66
Enclosure colour	black

#### Wall socket

Cable entry/enclosure drilling	1 x M40 Ø 17 - 28 mm, 1 x M40 plastic Ex-screw plug or 2 x M32 metal thread with 2 plastic Ex-screw plug
Connecting terminals	2 x 4 - 10 mm <sup>2</sup>
Enclosure material	glass-fibre reinforced polyester

#### Plug

Cable entry	Ø 17 - 28 mm
Connecting terminals	1 x 1.0 - 6 mm <sup>2</sup>
Enclosure material	Polyamide

#### Coupler

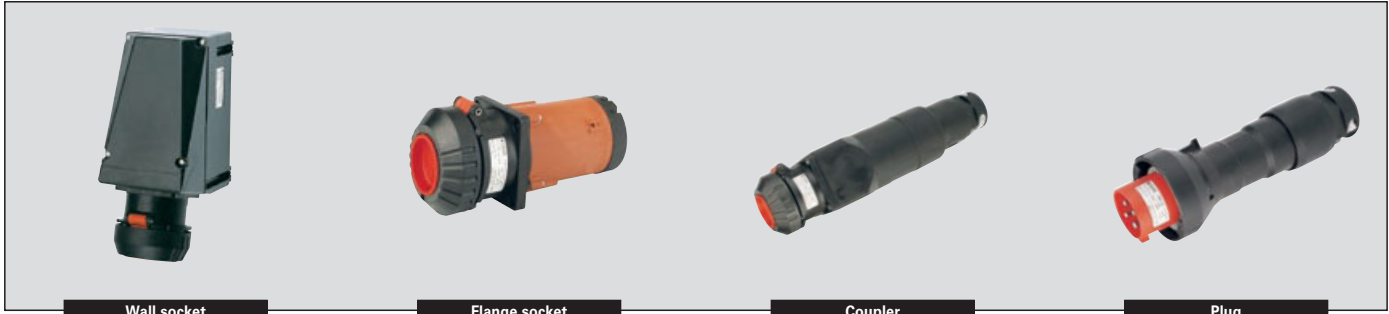
Cable entry	Ø 17 - 28 mm
Connecting terminals	2 x 4 - 10 mm <sup>2</sup>
Enclosure material	Polyamide

#### Flange socket

Connecting terminals	2 x 4 - 10 mm <sup>2</sup>
Enclosure material	Polyamide

<sup>1)</sup> extended temperature range on request

**| Zone 2: 32A 4-pole and 5-pole up to 690 V |**



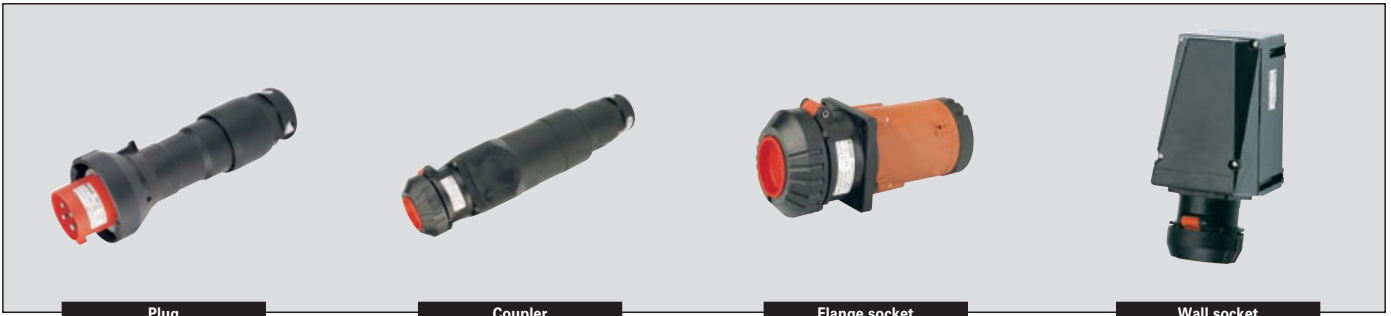
**Ordering details**

Voltage	h	Type	Cable entry	Weight approx.	Order No.
<b>Type 32 A 4-pole</b>					
200-250 V		Wall socket	KU	1.8 kg	<b>GHG 517 4409 R0001</b>
		Wall socket	ME	1.9 kg	<b>GHG 517 4409 R3001</b>
		Flange socket		1.0 kg	<b>GHG 517 8409 R0001</b>
		Coupler		1.7 kg	<b>GHG 517 3409 R0001</b>
		Plug		0.7 kg	<b>GHG 517 7409 R0001</b>
380-415 V		Wall socket	KU	1.8 kg	<b>GHG 517 4406 R0001</b>
		Wall socket	ME	1.9 kg	<b>GHG 517 4406 R3001</b>
		Flange socket		1.0 kg	<b>GHG 517 8406 R0001</b>
		Coupler		1.7 kg	<b>GHG 517 3406 R0001</b>
		Plug		0.7 kg	<b>GHG 517 7406 R0001</b>
480-500 V		Wall socket	KU	1.8 kg	<b>GHG 517 4407 R0001</b>
		Wall socket	ME	1.9 kg	<b>GHG 517 4407 R3001</b>
		Flange socket		1.0 kg	<b>GHG 517 8407 R0001</b>
		Coupler		1.7 kg	<b>GHG 517 3407 R0001</b>
		Plug		0.7 kg	<b>GHG 517 7407 R0001</b>
600-690 V		Wall socket	KU	1.8 kg	<b>GHG 517 4405 R0001</b>
		Wall socket	ME	1.9 kg	<b>GHG 517 4405 R3001</b>
		Flange socket		1.0 kg	<b>GHG 517 8405 R0001</b>
		Coupler		1.7 kg	<b>GHG 517 3405 R0001</b>
		Plug		0.7 kg	<b>GHG 517 7405 R0001</b>
<b>Type 32 A 5-pole</b>					
200-250 V		Wall socket	KU	1.8 kg	<b>GHG 517 4506 R0001</b>
380-415 V		Wall socket	ME	1.9 kg	<b>GHG 517 4506 R3001</b>
		Flange socket		1.0 kg	<b>GHG 517 8506 R0001</b>
		Coupler		1.7 kg	<b>GHG 517 3506 R0001</b>
		Plug		0.7 kg	<b>GHG 517 7506 R0001</b>

other voltage ranges and versions, e.g. with aux. contact, on request

KU = 1 x plastic cable glands M40 Ø 17-28 mm, 1 x M40 plastic Ex-screw plug

ME = 2 x metal thread M32 with plastic Ex-screw plug



Plug

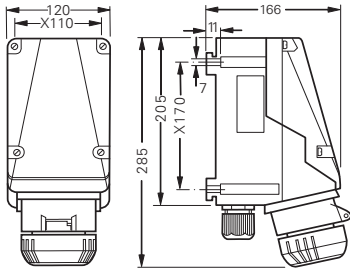
Coupler

Flange socket

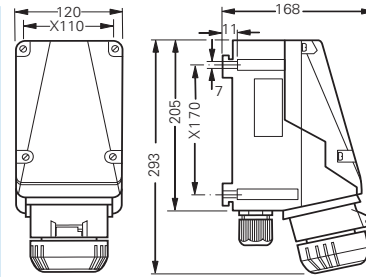
Wall socket

1

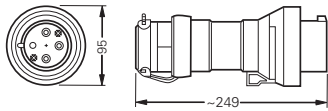
Dimension drawing | Wiring diagram



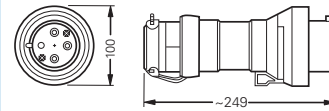
Wall socket 4-pole



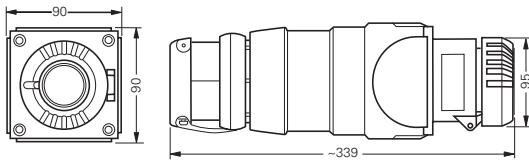
Wall socket 5-pole



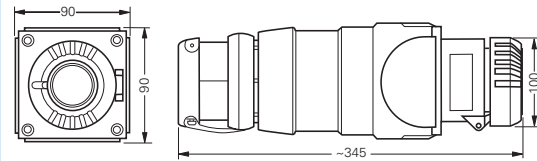
Plug 4-pole



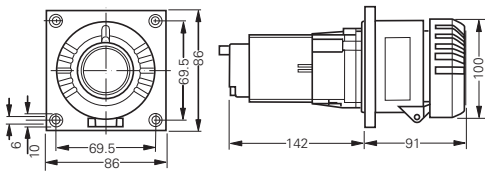
Plug 5-pole



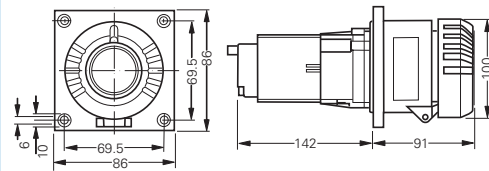
Coupler 4-pole



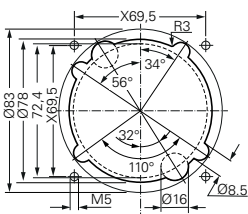
Coupler 5-pole



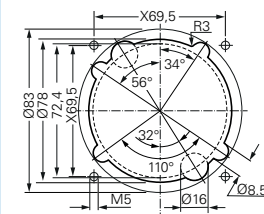
Flange socket 4-pole



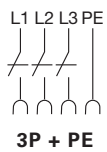
Flange socket 5-pole



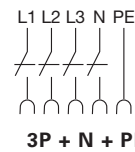
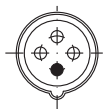
Assembly dimensions flange socket



Assembly dimensions flange socket X = fixing dimensions



3P + PE



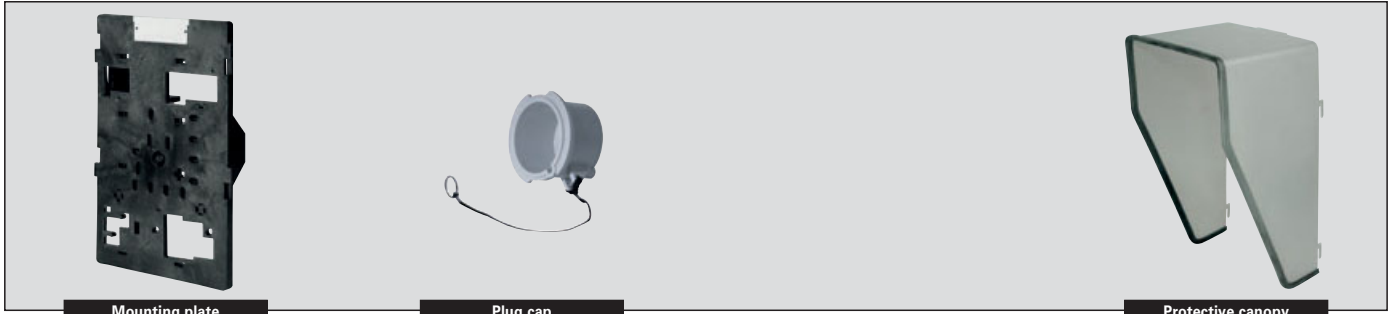
3P + N + PE



Dimensions in mm

**| Zone 2: 32A 4-pole and 5-pole up to 690 V |**

1



Mounting plate

Plug cap

Protective canopy

**Accessories**

**Mounting plates for wall sockets 32 A**

Type	Application	Fixing method	Order No.
Size 5	for wall mounting	snap on	<b>GHG 610 1953 R0128</b>
Size 5	for trellis mounting	snap on	<b>GHG 610 1953 R0128</b>
Size 5	for pipe clamp	snap on	<b>GHG 610 1953 R0132</b>

**Plug cap for plugs 32 A**

Type	Order No.
Plug 32 A 3-pole/4-pole	<b>GHG 510 1901 R0004</b>
Plug 32 A 5-pole	<b>GHG 510 1901 R0005</b>

**Accessories for mounting plates**

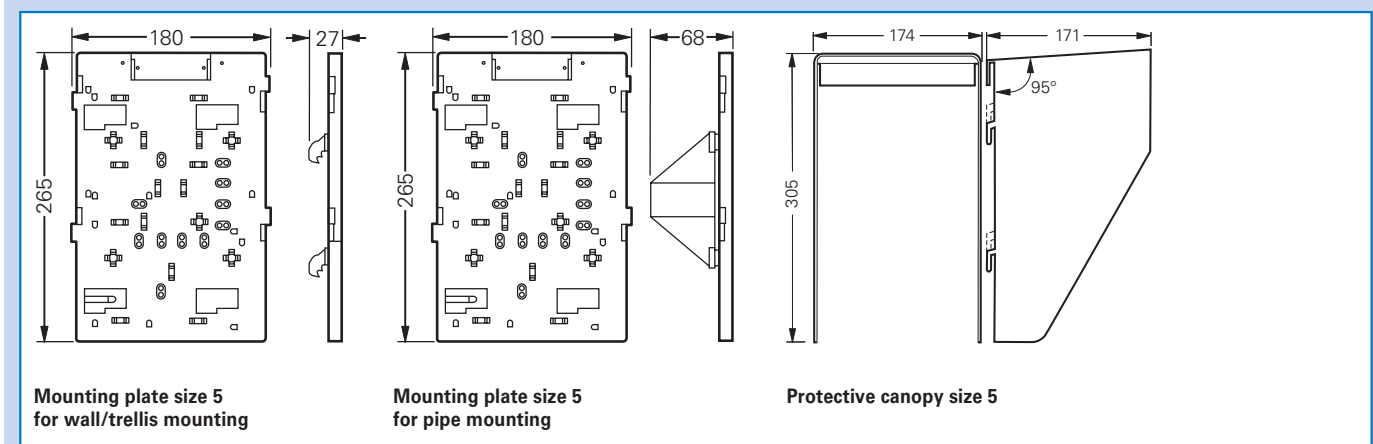
Type	OU	Order No.
Mounting set for pipes 1" (Ø 27 - 30 mm) for mounting plates with pipe fixing	10	<b>GHG 610 1953 R0020</b>

Please pay attention that only order units (OU) according to the ordering details can be delivered.

**Protective canopy for mounting plate**

Type	Application	Order No.
Size 5	for mounting plate size 5, snap on	<b>GHG 610 1955 R0108</b>

**Dimension drawing**



Mounting plate size 5 for wall/trellis mounting

Mounting plate size 5 for pipe mounting

Protective canopy size 5

Dimensions in mm